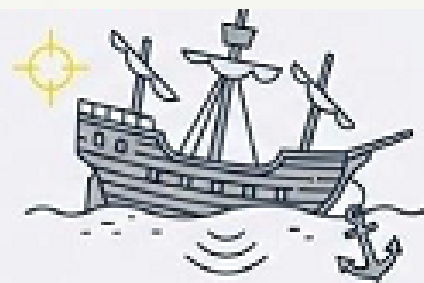


REMOTE GEOCOSMIC RESONANCE

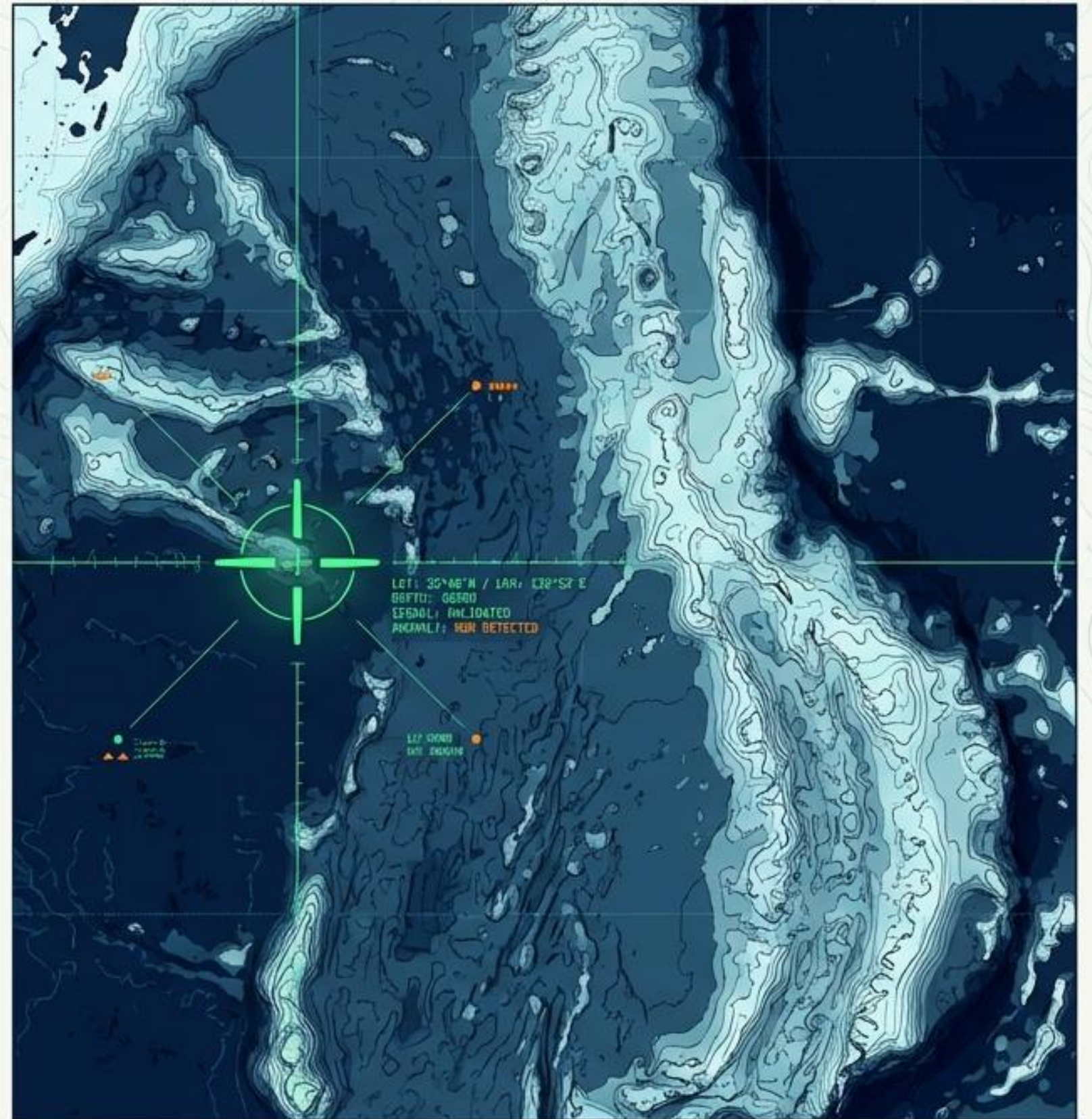
Validated Deep-Water
Search Capabilities
[0-6000m]



Archaeology and Shipwrecks.



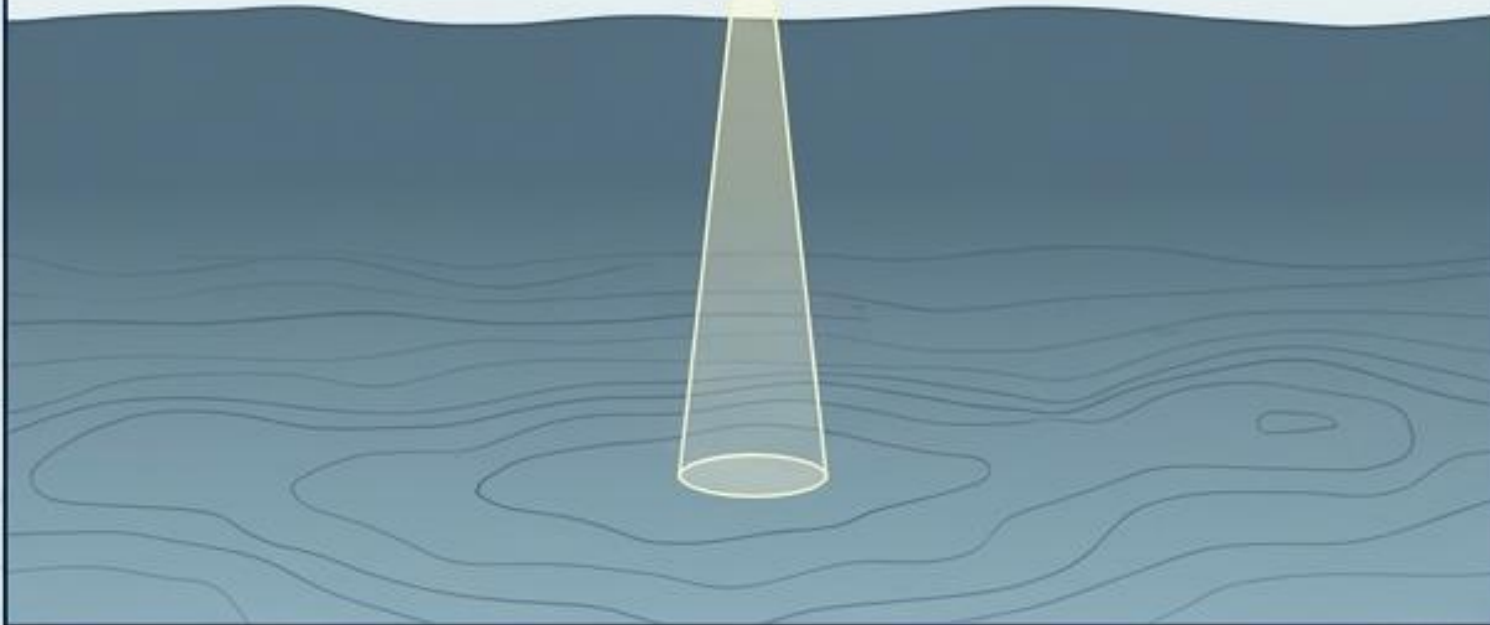
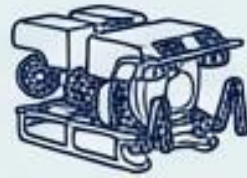
EXECUTIVE BRIEFING DOSSIER // DECLASSIFIED FIELD REPORTS



THE ERA OF LOCALIZED DEEP-SEA SWEEPING IS OVER.

RDV MDEL: DRIDN DEEP-SCAN X7
BEAM WIDTH: 5m @ 5000m DEPTH
SPEED: 1.2 KNOTS

COORD: 35°48'N 139°45'E
DEPTH: 5200m



COORD: 35°40'N 139°45'E

DEPTH: 5200m

TRADITIONAL SEARCH

Traditional methods rely on historical data and slow physical sweeping. Effective only when coordinates are known.



COVERAGE EFFICIENCY

DATA RATE: 512 kbps
SWATH: 100m

SATELLITE: AEGIS-SAT DRBITER
SCAN SYSTEM: GEODESMIC
RESONANCE SENSOR ARRAY
ALTITUDE: 750 KM



ORBIT: LEO POLAR
SCAN SECTOR: PACIFIC NW
TARGET ANOMALIES: 12,450+



TIME: LEO POLAR

TIME: 14:35:22 UTC

GEOCOSMIC RESONANCE

Remote satellite technologies map vast oceanic territories instantly, pinpointing structural anomalies and specific mineral payloads at extreme depths—up to 6000 meters—with zero prior intelligence.



GLOBAL COVERAGE

DATA RATE: 10 Gbps
SWATH: 5000km
DEPTH: 0-6000m (MAX)

The "Poisk" Geocosmic & Resonance-Test Pipeline

01 // GEOSPACE TARGETING

SCAN RESOLUTION:
<1m

TARGET AREA:
GLOBAL

COORDINATS:
X: 137.99 E, 227 W

COORDINATS:
X: 232.35 44 W
Y: 522.51 00N

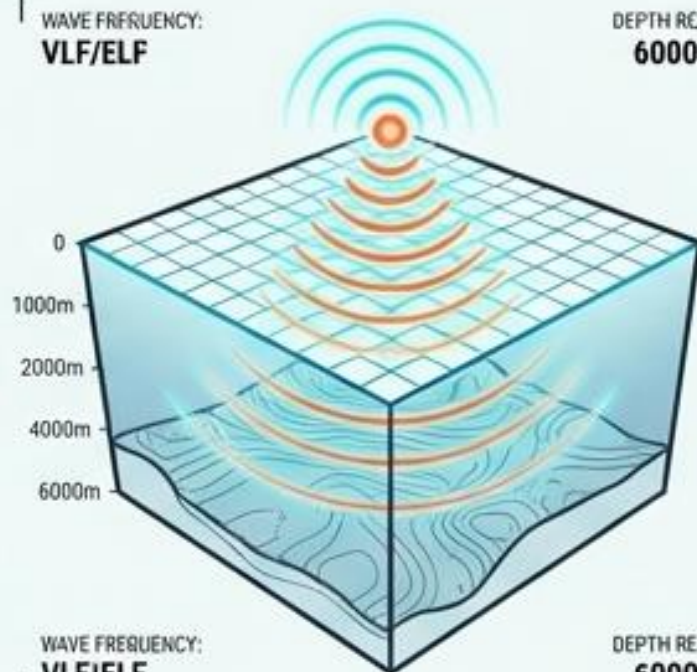


Remote photo-reconnaissance satellites map the designated macro-territory.

02 // RESONANCE PENETRATION

WAVE FREQUENCY:
VLF/ELF

DEPTH REACH:
6000M+



WAVE FREQUENCY:
VLF/ELF

DEPTH REACH:
6000M+

The remote geophysical complex deploys resonance-testing to sense subsurface anomalies, penetrating oceanic depths up to 6000m.

03 // DECIPHERING & ANALYSIS

ANALYSIS SPEED:
REAL-TIME

MATERIAL ID:
CONFIRMED



ANALYSIS SPEED:
REAL-TIME

MATERIAL ID:
CONFIRMED

Raw resonance data is rapidly translated to outline specific flooded objects and identify internal material compositions.

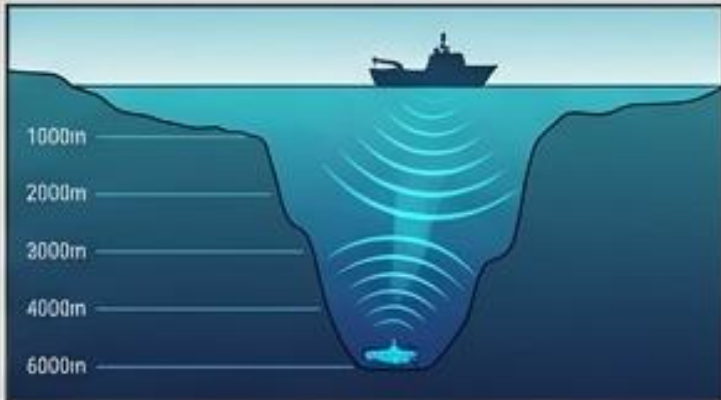


Defining the “Blind” Search Protocol

[ZERO HISTORICAL INPUT]

Researchers are provided absolutely no available information, coordinates, or historical data about the target object.

[EXTREME DEPTHS]



The target rests in the abyssal zone, testing the limits of resonance penetration far beyond standard sonar capabilities.



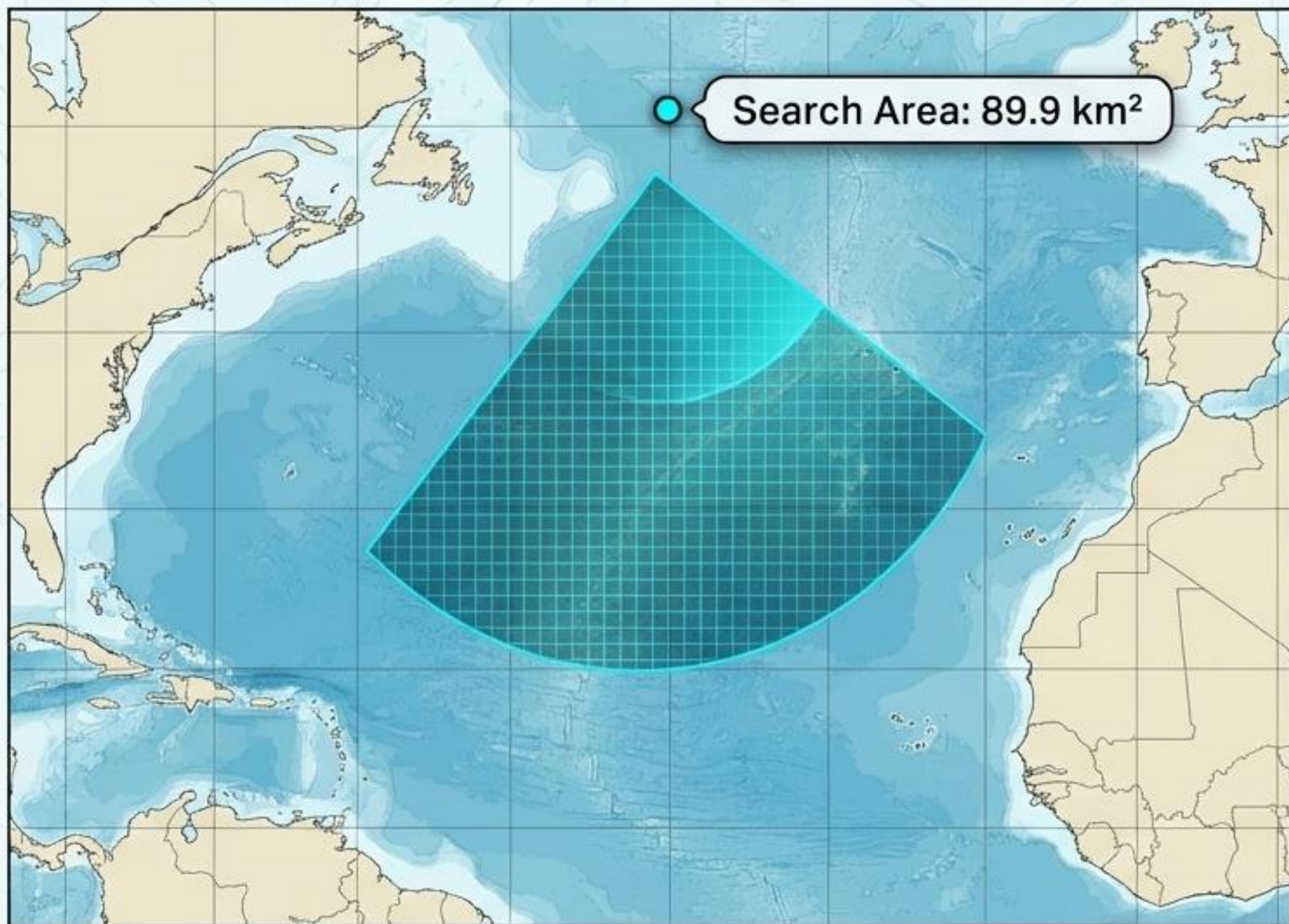
[VAST SEARCH GRIDS]



The system must scan macro oceanic territories (e.g., 90+ square kilometers) rather than confined, pre-vetted zones.



Operation Magellan: The Atlantic Ocean Challenge



Date:

July – August 2019

Task Force:

Sevastopol State University &
LLC "Gruppa Poisk"

Evaluator:

Magellan Limited (England)

MISSION PARAMETERS



• **Objective:**
Search and outline flooded objects



• **Methodology:**
Purely remote geocosmic and
resonance-test equipment



• **Condition:**
Executed completely "blindly"

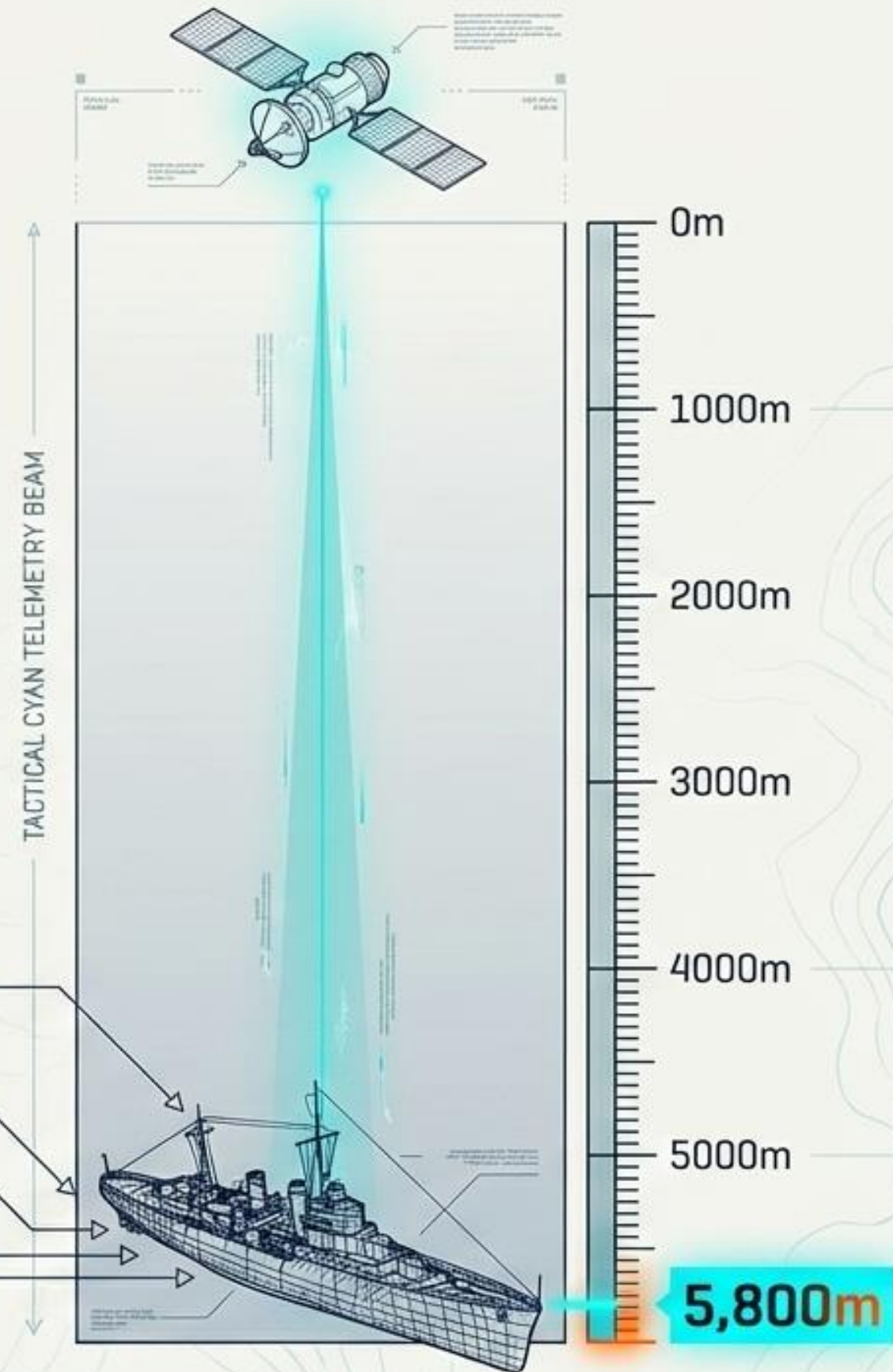
Absolute Structural Precision at 5800 Meters

“High degree of reliability... confirmed actual location of the wreck.”

- Richard Parkinson, President, Magellan Limited.

TARGET VERIFIED

Depth:	5,800m
Vessel Dimensions:	145.1m x 18.7m x 7m
Construction Year:	1939
Sinking Year:	1944



Operation Blue Sky: Payload & Mineral Targeting

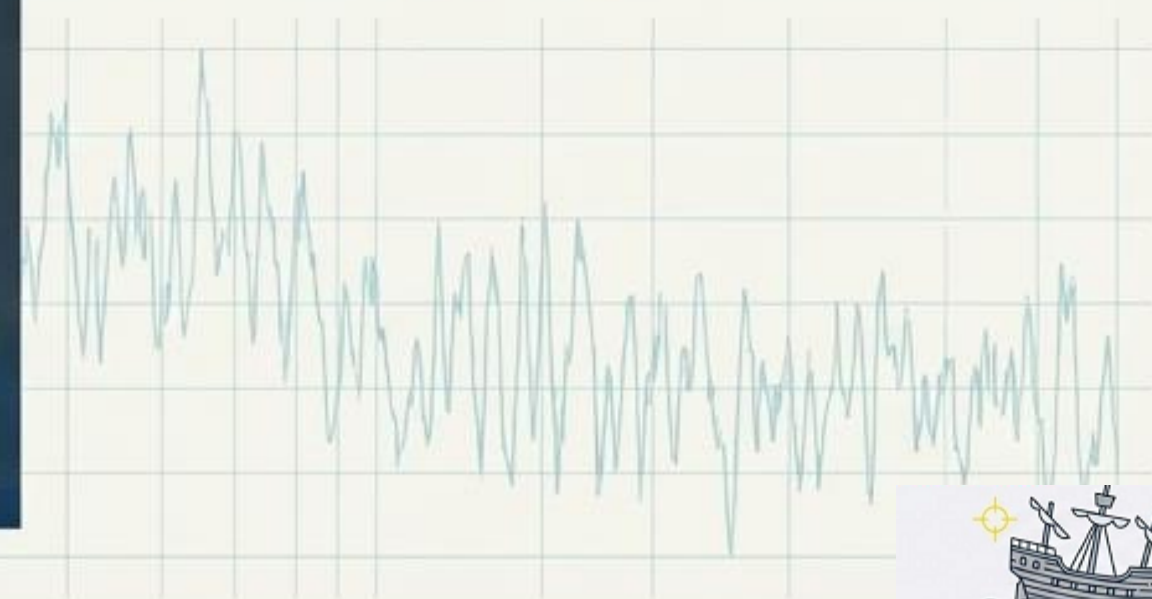
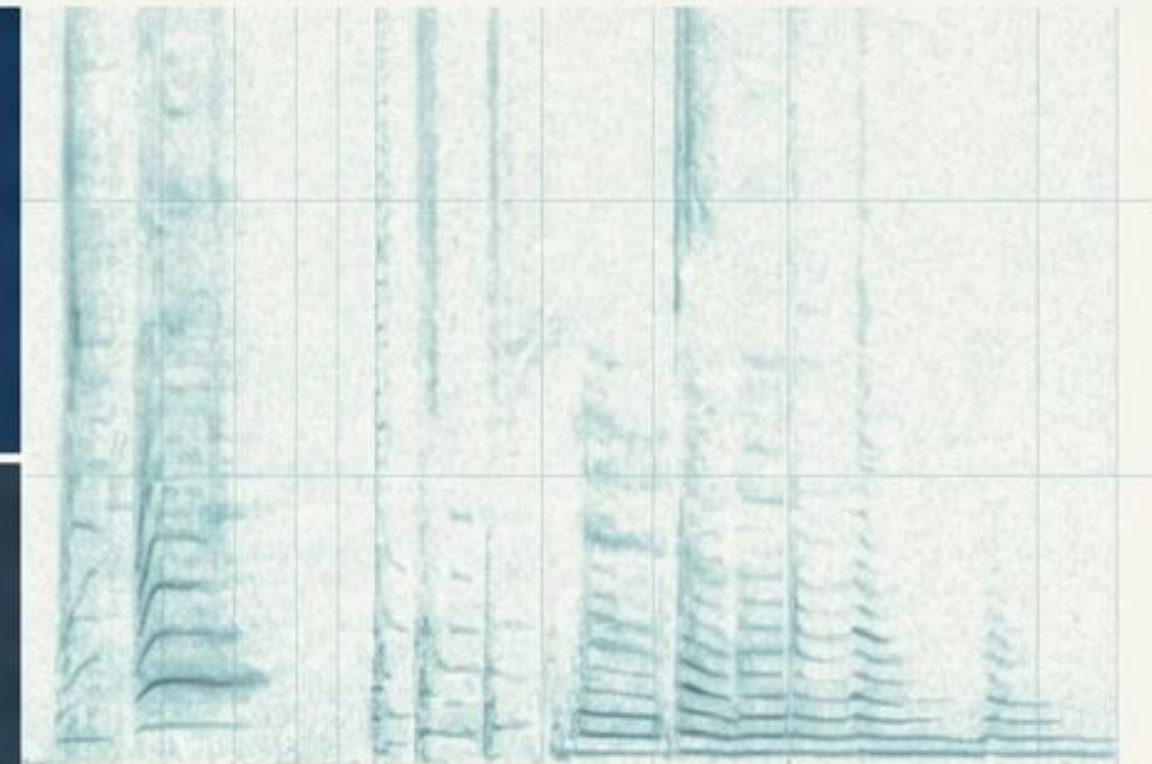
*Blue Sky Satellite Scan,
LLC*

Date Box:	March 29, 2016
Task Force:	Nautilus Group
Evaluator:	Blue Sky Satellite Scan, LLC

MISSION PARAMETERS

Objective: Test S-1

Goal: Prove technology accurately translates resonance data into specific mineral identification inside flooded targets.



Positive Identification of Target Payload

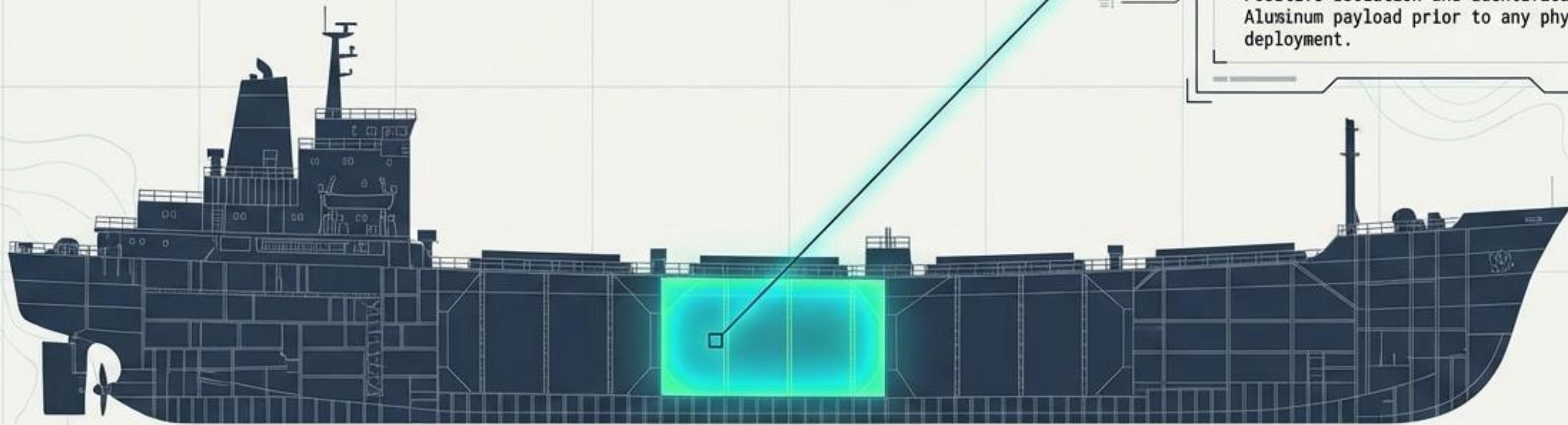
“Very accurate on minerals... finish Aluminum when you get facility on line. Coordinates of vessel are pretty good as well.”

– Gale George, Blue Sky

Al

RESULTS ACHIEVED

- Rapid translation of remote scans.
- Highly accurate coordinates delivered.
- Positive isolation and identification of Aluminum payload prior to any physical deployment.



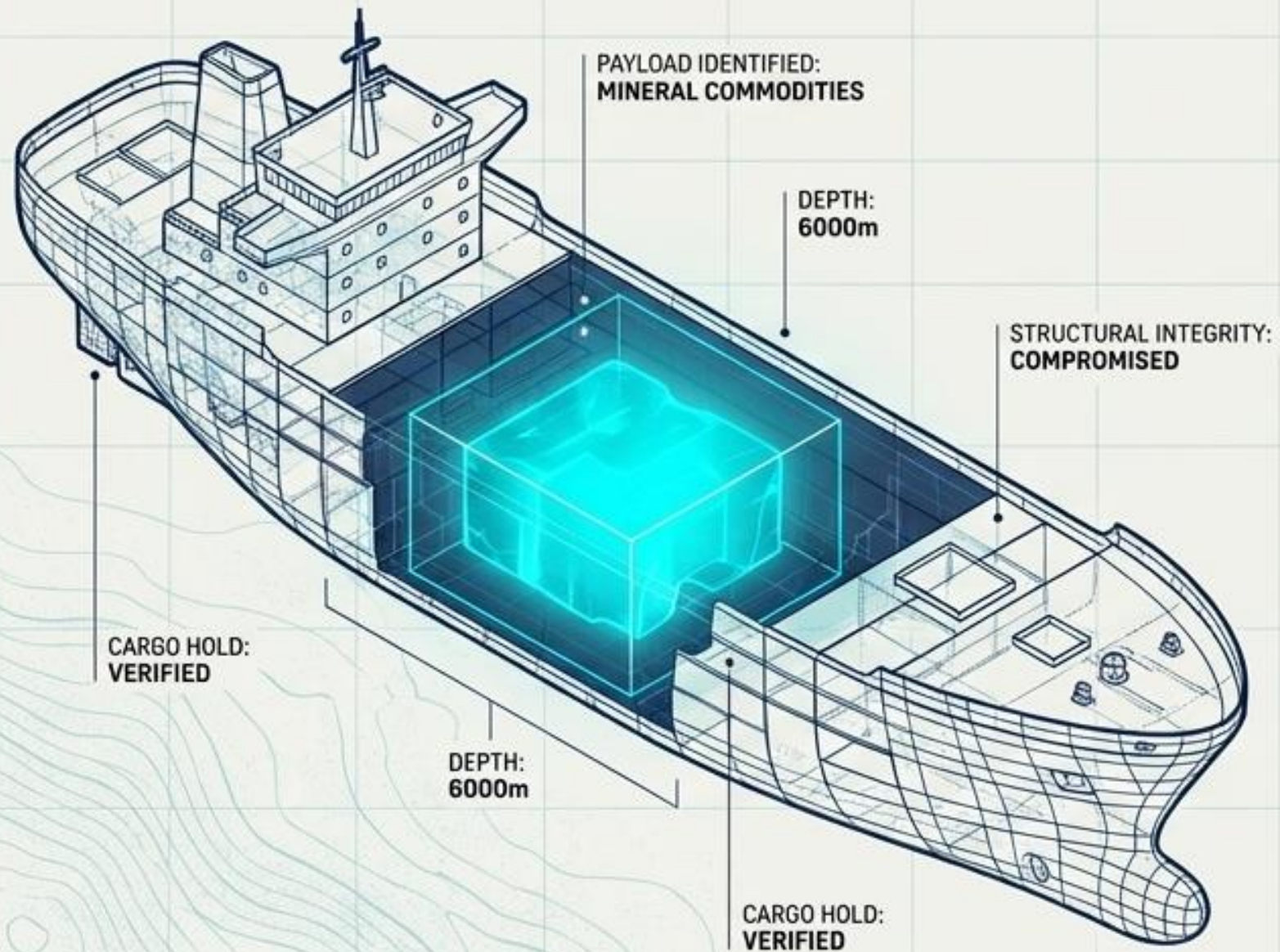
Cross-Operational Validation Matrix

Parameter	Magellan Limited (2019)	Blue Sky / Nautilus (2016)
Primary Objective	[✓] Structural Location & Outline	[✓] Mineral / Payload Analysis
Target Focus	145m Wreck	Aluminum Cargo
Operational Condition	Blind, 89.9 km ² Grid	Fast Translation & Verification
Demonstrated Depth	Extreme (5800m)	Unspecified Deep Water
Tech Application	Geocosmic Photo-Reconnaissance	Resonance Material Sensing



The Complete Salvage Picture: Structure + Payload

THE PARADIGM SHIFT: Finding a wreck is only half the battle. Deploying deep-sea ROVs costs millions and risks empty holds.



The Dual Advantage:

1. Locate

Map the exact physical dimensions of the target at depths up to 6000m (Magellan capability).



RESOLUTION: $\lt; 1\text{m}$
SURVEY AREA: 89.9 km²
COORDINATES: 38°51'24"N, 77°03'28"W

2. Verify

Confirm the presence of specific, valuable mineral commodities before launching a recovery vessel (Blue Sky capability).



MINERAL DETECTED: Aluminum
CONFIDENCE: HIGH
VERIFICATION TIME: RAPID
PAYLOAD VOLUME: EST. 45,000 TONS



Precision Mapping for Next-Generation Salvage

The Geocosmic & Resonance-Test Complex transforms extreme deep-water exploration from a game of chance into an exact science.



Europeans compliance the deep-sea recovery vessel technical place to maintain the deep-water. Bathymetric automation and the sampling staff you help to discover mentioned.

Deploy Validated Telemetry // Secure Coordinates // Minimize Operational Risk // Optimize Recovery Yield

Copyright © Michel Louis Friedman, 01/2026. All rights reserved. No reproduction without permission.

Customized version

1. For translation costs, please contact us.
2. For the addition of company-specific documentation, please contact us.
3. For an editable option, please contact us.
4. Consultations available at **Michel.friedman@fands-llc.com** or **mlf10357@yahoo.com** .

o All translations, logos, terms, and specific concepts are the property of Fands-llc worldwide.

o RSS-NMR® is a registered trademark worldwide at the home address of Michel-Louis Friedman-Matarese.

Disclaimer

The opinions, analyses, and explanations expressed in this text are solely those of their author, Michel Louis Friedman. They do not represent the views of any institution, company, employer, or other entity. The author disclaims all liability for the use or interpretation of this material.

Copyright Law © March 11, 1957 Law No. 57-298 of March 11, 1957, concerning the ownership of literature and artists

o Copyright © 2005-2026 Fands-LLC

o Copyright © 2009-2026 Fands-LLC div. Proactive Economic Intelligence

o All copyright © and trademark ® are protected under the U.S. Copyright Act of 1976 and subsequent amendments, and related laws contained in Title 17 of the United States Code.

All U.S. rights, © and registered trademarks ® are in accordance with applicable law.

Patents and Trademarks (December 12, 1980) <https://www.copyright.gov/>



Made
in Russia

Voluntary certification system «Made in Russia»
Registered in the Unified Register of registered voluntary certification systems
Reg. № РОСС RU.31685.047003 from the 24th of May 2017

Система добровольной сертификации «Сделано в России»
Зарегистрирована в Едином реестре зарегистрированных систем
добровольной сертификации
№ РОСС RU.31685.047003 от 24 мая 2017 г.

CERTIFICATE OF CONFORMITY СЕРТИФИКАТ СООТВЕТСТВИЯ

№ CC.000647

Valid from 20.10.2025 to 05.10.2026

Срок действия с по

Applicant/Manufacturer: Poisk Group LLC, 299640, Russia, Sevastopol,
st. Khristofora, 143

Заявитель/Производитель: ООО «ГРУППА ПОИСК», 299640, Россия, г. Севастополь,
ул. Христофора, д. 143

Products: Methodology for calculating predicted ore reserves in deeplying deposits using
the parameters of ore bodies obtained using remote geospace methods of geological exploration
and field geophysical equipment of the Poisk complex (EACH of the CU 901680900)

Продукция: Методика подсчета прогнозируемых запасов руд в глубинных залежах с
использованием параметров рудных тел, полученных с помощью дистанционных
геологических методов геологического изучения и полевой геофизической аппаратуры комплекса
«Поиск» (код ТН ТСД, ЕАЭС 901680900)

Comply with the voluntary certification system "Made in Russia" requirements.

Соответствует требованиям Системы добровольной сертификации «Сделано в России».

Certificate is issued on the basis of: Declaration of conformity company Poisk Group LLC
on the Reliability of the voluntary certification system "Made in Russia" dated 07.10.2025 № 105.

Сертификат выдан на основании: Декларации о соответствии компании
ООО «ГРУППА ПОИСК» № 105 от 07.10.2025 по направлению «Надежность» системы
добровольной сертификации «Сделано в России».

Made in Russia VCS Holder RussiaExpert Center JSC
125050, Moscow, Primenyubnyyulitsy 48/10
Клиентская служба (номер) 8 (495) 797 44 00
e-mail: info@madeinrussia.ru
tel: +7(495)807-47-47

Держатель СДС «Сделано в России» АО «РоссияЭксперт Центр»
125050, Москва, Промышленный проезд
Применюбный ул. 48/10, каб. 101
800-200-0000 (номер) info@madeinrussia.ru
тел: +7(495)807-47-47

Vice President
Вице-президент

A.V. Solodov
А.В. Солодов



000647

СИСТЕМА ДОБРОВОЛЬНОЙ СЕРТИФИКАЦИИ «ПРИМОР-ЭКСПЕРТ»
Рег. № РОСС RU.31678.040000 от 14.11.2016 г.



СЕРТИФИКАТ СООТВЕТСТВИЯ

№ РОСС RU.31678.040000

Срок действия с 20.10.2025 по 05.10.2026

№ 0057630

ОБЛАСТЬ СЕРТИФИКАЦИИ: РОСС RU.31678.040000

Сфера и область применения продукции ООО «Примор-Эксперт»: Марш 140000, РОССИЯ, Мурманская область, город Мурманск
Специальный округ Октябрьский, улица Восточная, дом 14, этаж 4, помещение 31. Телефон: +7(495)807-47-47,
сайт: internet@primor-expert.ru

ПРОДУКЦИЯ: Методика подсчета прогнозируемых запасов руд в глубинных залежах с
использованием параметров рудных тел, полученных с помощью дистанционных
геологических методов геологического изучения и полевой геофизической аппаратуры комплекса
«Поиск» (код ТН ТСД)

100 ЦС
21.11.21

СООТВЕТСТВИЕ ТРЕБОВАНИЯМ НОРМАТИВНЫХ ДОКУМЕНТОВ

100 ЦС

ИЗДАТЕЛЬСТВО: Общество с ограниченной ответственностью «Группа Поиск», ОГРН 110501880002, ИНН
504004040, КПП 504004000, Марш 140000, РОССИЯ, город Мурманск, Октябрьский район, улица Восточная, д. 14, телефон:
+7(495)807-47-47, сайт: internet@primor-expert.ru

СЕРТИФИКАТ ВЫДАЕТ: Общество с ограниченной ответственностью «Группа Поиск», ОГРН 110501880002,
ИНН: 504004040, КПП: 504004000, Марш 140000, РОССИЯ, город Мурманск, Октябрьский район, улица Восточная, д. 14, телефон:
+7(495)807-47-47, сайт: internet@primor-expert.ru

НА ОБЪЕКТАХ

Применюбный ул. 48/10, 0407021, Мурманская область, город Мурманск, Октябрьский район, улица Восточная, д. 14, телефон:
+7(495)807-47-47



ДОСТАВЛЯЕТСЯ НА СЕРТИФИКАЦИОННОМ

Стеке (сертификат № 1)



Руководитель центра

З.И. Иванова

Сертификат выдан на основании Декларации о соответствии компании

И.И. Фомин
Исполнитель
А.В. Нечкина
Исполнитель



Archaeology and Shipwrecks.



FANDS-LLC | Proactive Economic Intelligence

Physical office: Aparthotel El Suto, Calle El Suto s/n, San Jose de Chiquitos, Bolivia

Email: Michel.friedman@fands-llc.biz

WhatsApp: +591 71696657