

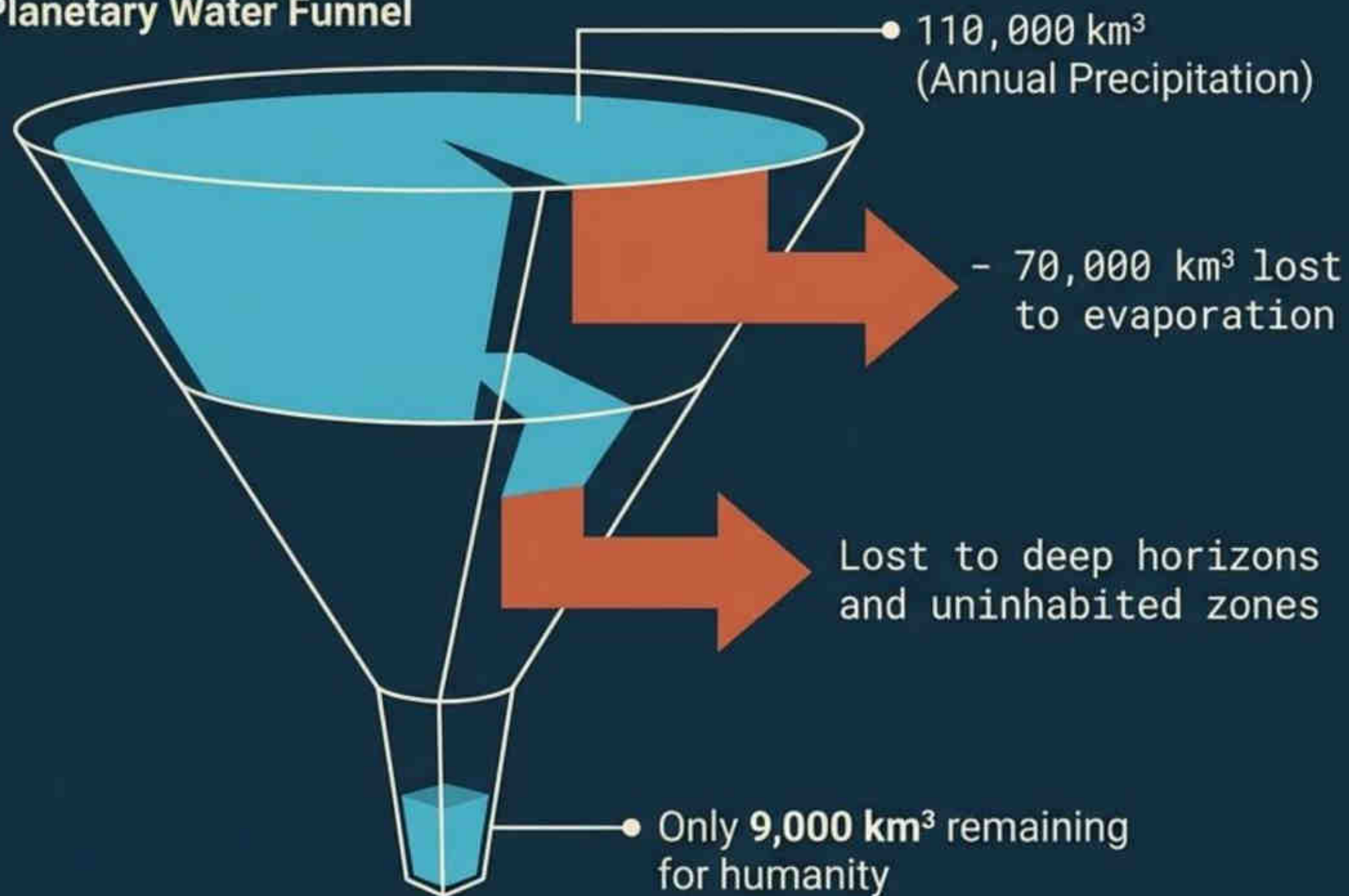
The Blue Ledger: Reconciling the Global Water Deficit



An analysis of systemic water scarcity, geopolitical friction, and the decentralized technologies required for ecological solvency.

Earth's water cycle operates at a severe human deficit

Planetary Water Funnel

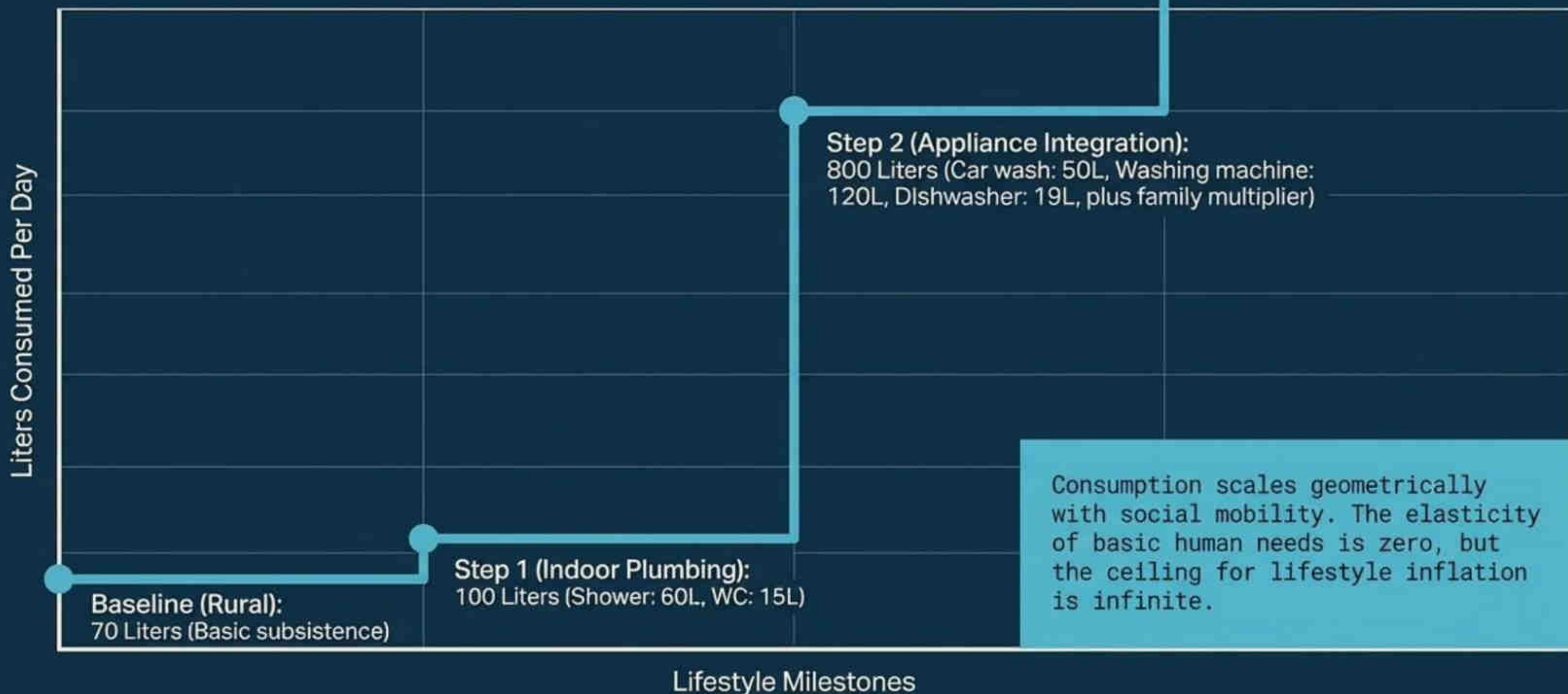


Green Water (6,000 km³):
Evaporates before forming
rivers; used in pluvial
agriculture.

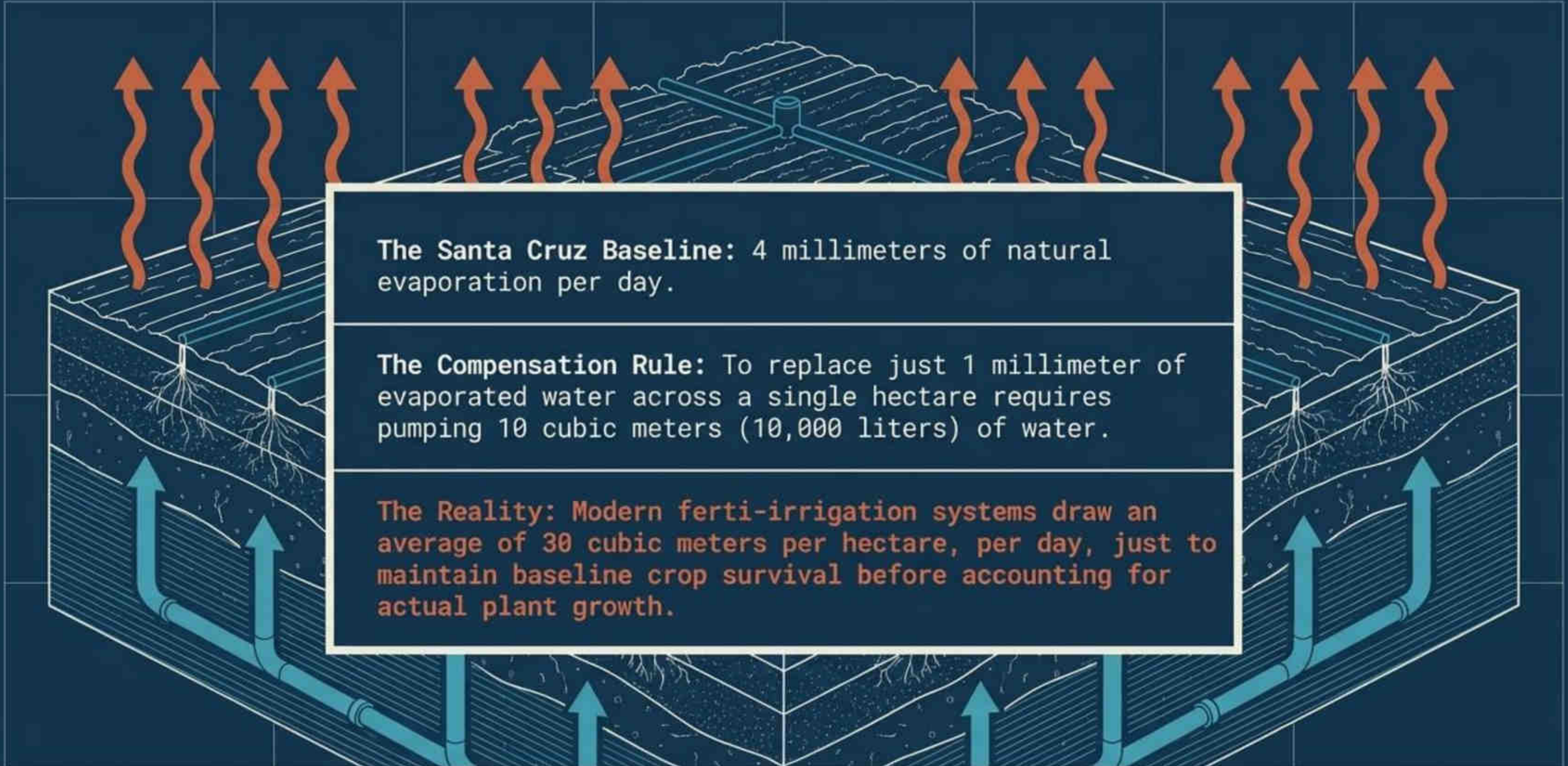
Blue Water (3,000 km³):
River formations; 80% of
this is consumed by
agriculture.

The 2025 Reality: This
rigid 3,000 km³ supply
must stretch to serve an
estimated 8.3 billion
people.

Sociological advancement drives geometric water demand



Compensating for natural evaporation creates compounding agricultural debt



The diagram illustrates the water cycle in an agricultural field. At the top, a field of crops is shown with a central pivot irrigation wheel. Red wavy arrows point upwards from the soil surface, representing natural evaporation. Below the surface, a cross-section of the soil shows plant roots. Blue arrows point upwards from the soil, representing water being drawn up by the plants. At the bottom, blue pipes represent an irrigation system, with blue arrows pointing upwards from the pipes into the soil, representing water being pumped to the surface. A central text box contains three paragraphs of text.

The Santa Cruz Baseline: 4 millimeters of natural evaporation per day.

The Compensation Rule: To replace just 1 millimeter of evaporated water across a single hectare requires pumping 10 cubic meters (10,000 liters) of water.

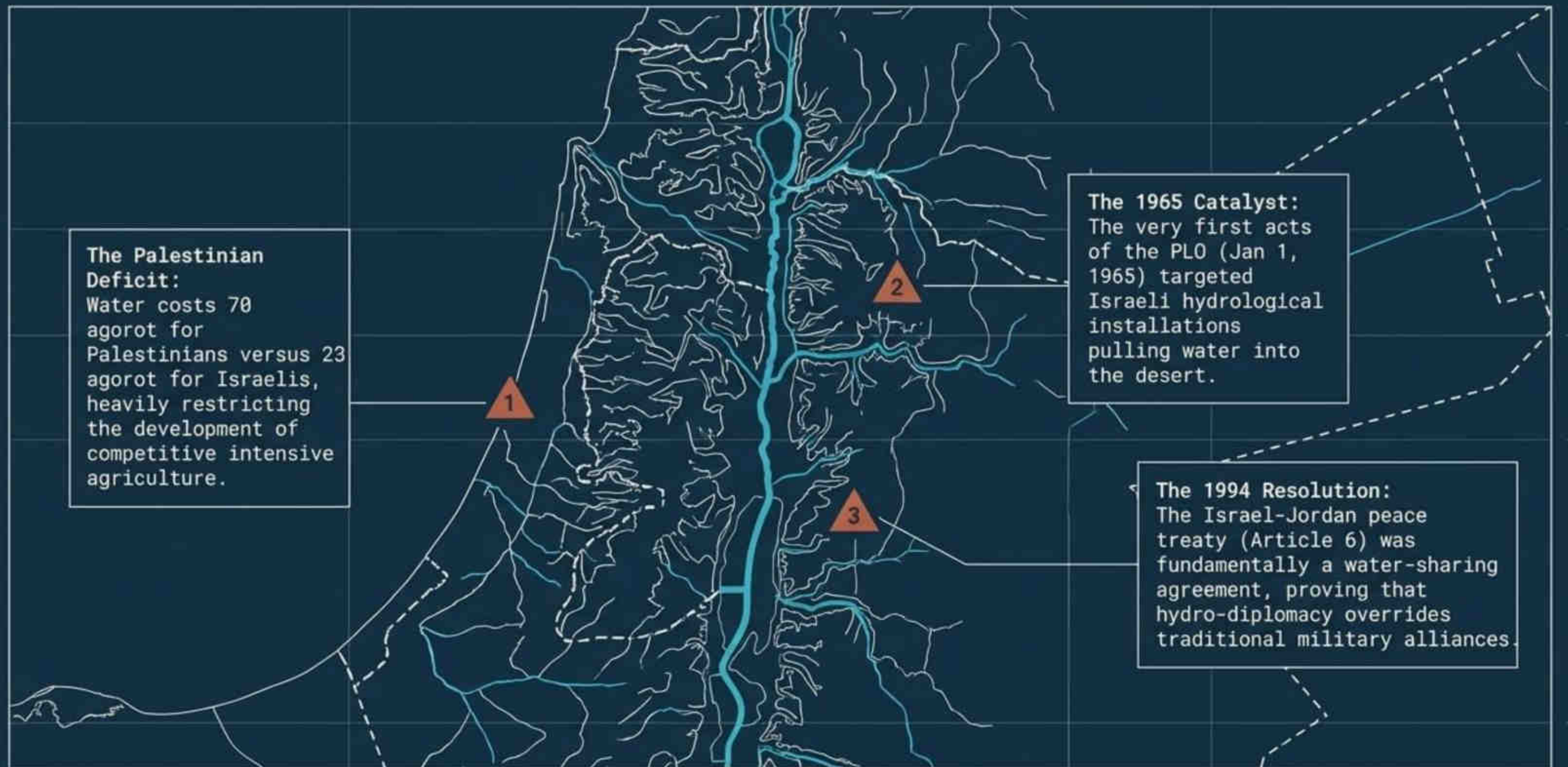
The Reality: Modern ferti-irrigation systems draw an average of 30 cubic meters per hectare, per day, just to maintain baseline crop survival before accounting for actual plant growth.

Hydrological deficits directly correlate with regional instability



1,000 m³ of water per year is the absolute minimum required to produce a single human's annual food supply. Falling below this threshold triggers 'White Gold' weaponization.

The Jordan River basin demonstrates the absolute weaponization of aquifers

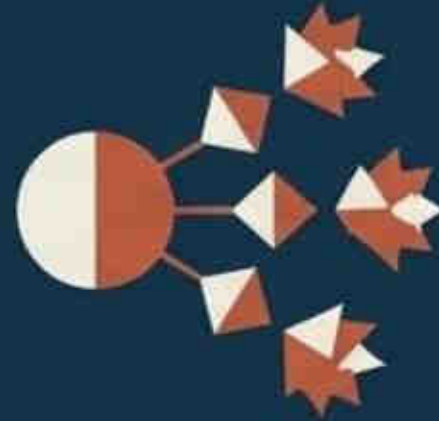


Untreated urban runoff engineers irreversible biological cascades

The 1984 Monaco Bay Disaster Pathway



The Vector: Negligent wastewater treatment allows *Caulerpa Taxifolia* to escape.



The Mutation: Moving to a new ecosystem, the algae develops a new reproductive system (spore dissemination + progression).



The Density: Achieves a suffocating concentration of 8,000 leaves per square meter, destroying fish reproduction zones.



The Toxicity: Adapts to produce a localized toxin capable of killing a mouse with just 1 ingested gram.

The invisible health crisis spans from rural infrastructure to premium industry

The Vector of Infant Mortality



When powdered infant formula was introduced in areas of Africa lacking potable water infrastructure, infant mortality paradoxically spiked by 1,000%. The water itself became a deadly transmission vector.

The Biochemical Oxygen Demand (BOD) Crisis



In France, a single wine bodega producing 14 million liters of wine generates the exact same organic pollution footprint as a city of 20,000 inhabitants. Discharging 6% of waste grape juice asphyxiates river ecosystems by consuming all available oxygen.

Traditional potabilization relies on rigid, centralized civil engineering



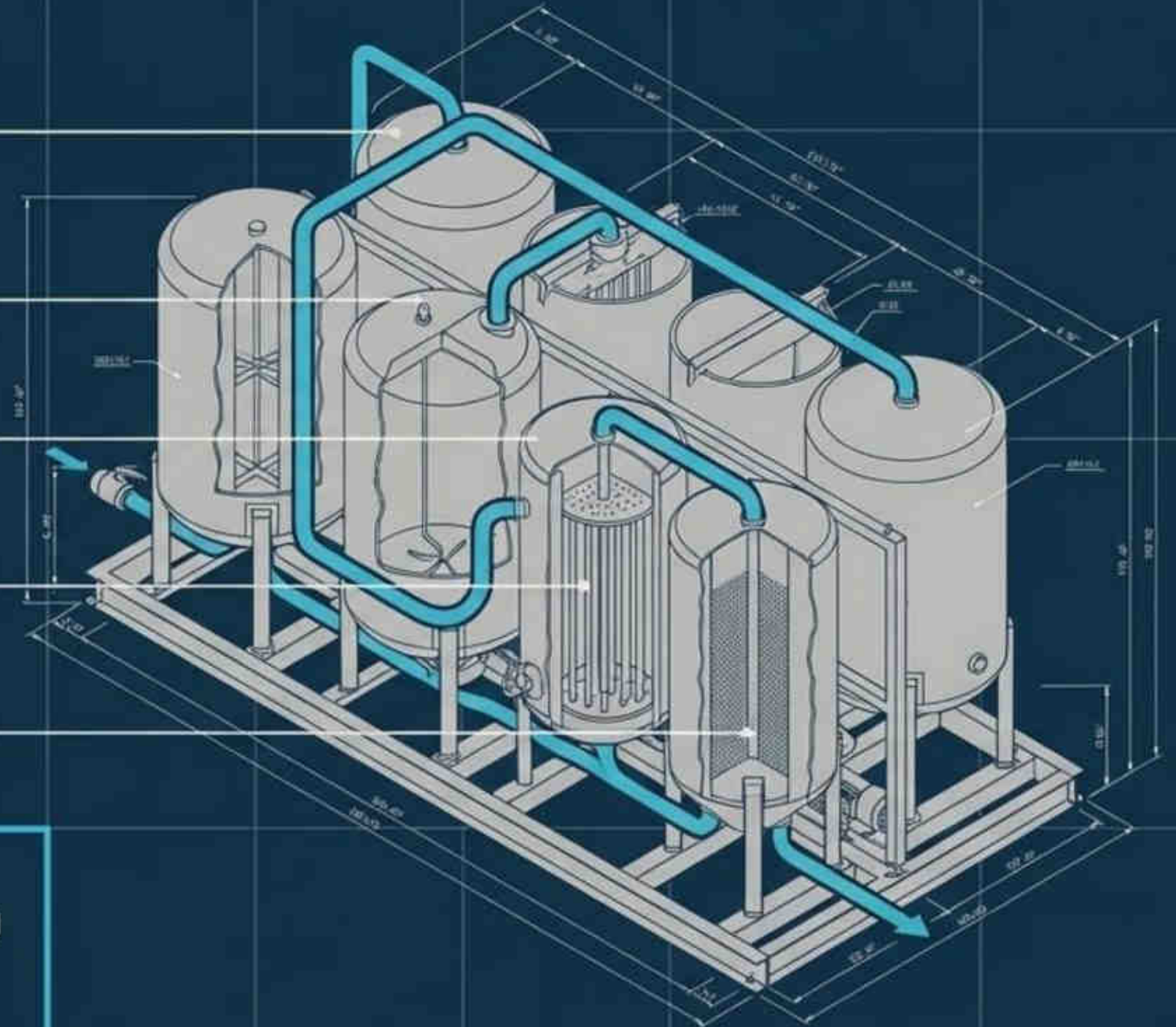
This linear system demands massive capital, permanent civil infrastructure, and dense, captive urban populations to justify the cost. **It fails completely in remote or rapidly shifting environments.**

The decentralized paradigm: Modular agility over static infrastructure

Dimension	Traditional Infrastructure	Modular Systems (POTAMAX / TEI)
Deployment Time	2 to 5 years	Under 5 days
Civil Engineering	Massive concrete footprint	Zero (Skid-mounted / ISO Container platforms)
Energy Footprint	High / Continuous Grid	0 kW/h (Manual) to 6.5 kW/h (Auto)
Adaptability	Fixed to original urban plan	Fully mobile, relocatable to crisis zones
Operational Staff	Highly specialized engineers	Unskilled personnel with minimal training

POTAMAX architecture: 5-step autonomous potabilization

1. Pre-chlorination
(Sodium hypochlorite injection)
2. Flocculation
3. Decantation
4. Filtration
5. Final Disinfection



Core Engineering Advantage:
Constructed entirely of stainless steel with zero moving mechanical parts, eliminating the possibility of mechanical failure or operator error in harsh climates.

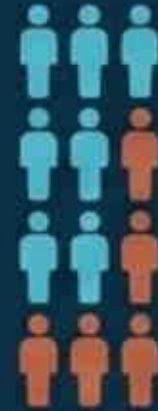
Scalable deployment to meet WHO 1986 safety standards

Output Range

5 m³/h to 50 m³/h

Models 5S through 50S

Population Served



× 13,330 people

Sustained by a single 50S unit
(at 75 liters/day per capita).

Power Efficiency

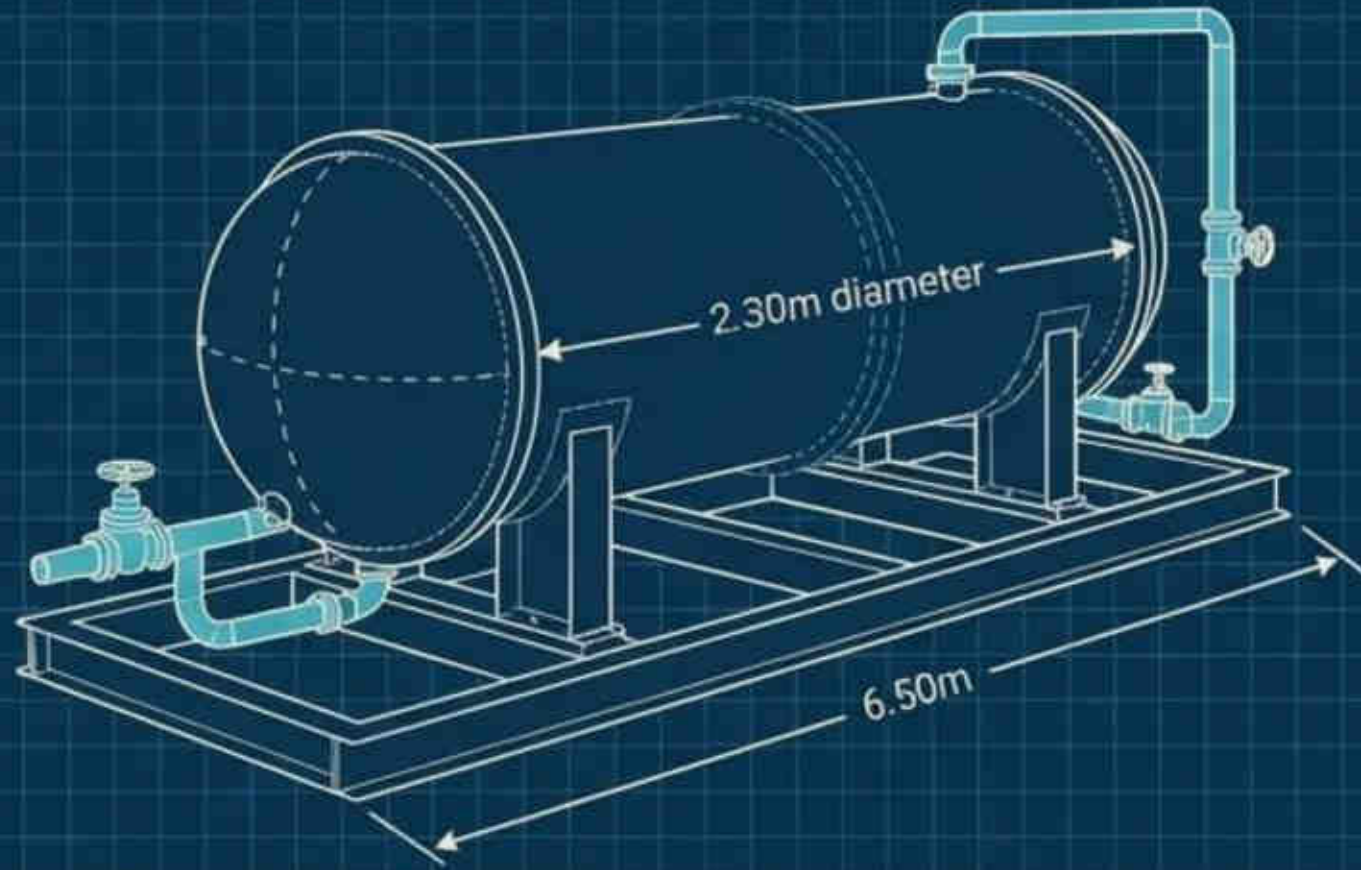


Manual models run on 0 Kw/h, utilizing the water's own kinetic energy for processing. Automated models max out at just 6.5 Kw/h.

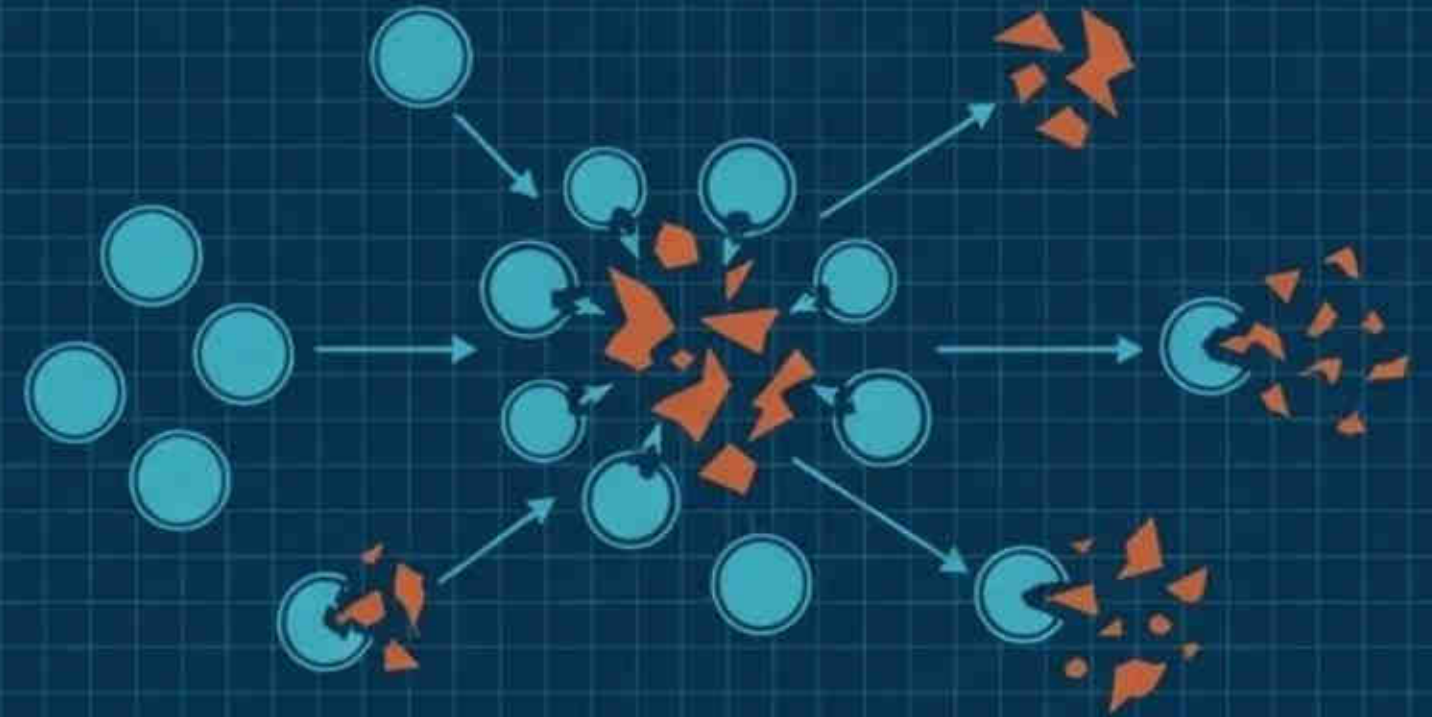
O.M.S. (WHO) Compliance

- ✓ Capping turbidity at 10,000 JTU
- ✓ Nitrates strictly below 44 ppm
- ✓ Guaranteed biological potabilization

Closing the loop: Industrial recovery and bacterial bioremediation



TEI Modular Systems: 2.30m diameter horizontal cylinders delivered fully assembled. Designed for industrial sites lacking the footprint for permanent wastewater plants. Ideal for sudden spikes in organic contamination.



Biological Remediation: Applied directly to oxidation lagoons. Cultured bacteria systematically consume organic matter, feces, detergents, and hydrocarbons.

Targeted Neutralization: Actively hunts dangerous human pathogens including E. coli, Salmonella, and Aeromonas, while severely lowering ammonia and nitrate levels to prevent algae blooms.

The Civic Mandate: Technology requires a cooperative foundation



The Saguapac Precedent: True water security relies on the cooperative model—pairing advanced oxidation and quality control with strict civic compliance.

The Behavioral Shift: Technology alone cannot outpace geometric demand. Closing the tap is as fundamental as literacy. We must maintain our septic systems, recycle our wastewater, and fund our cooperatives.

Final Takeaway: “We are on this earth to utilize, not to possess and destroy. Survival depends on balancing the blue ledger for the generations that inherit it.”

Copyright © Michel Louis Friedman, 01/2026. All rights reserved. No reproduction without permission.

Customized version

1. For translation costs, please contact us.
2. For the addition of company-specific documentation, please contact us.
3. For an editable option, please contact us.
4. Consultations available at **Michel.friedman@fands-llc.com** or **mlf10357@yahoo.com** .

o All translations, logos, terms, and specific concepts are the property of Fands-llc worldwide.

o RSS-NMR[®] is a registered trademark worldwide at the home address of Michel-Louis Friedman-Matarese.

Disclaimer

The opinions, analyses, and explanations expressed in this text are solely those of their author, Michel Louis Friedman. They do not represent the views of any institution, company, employer, or other entity. The author disclaims all liability for the use or interpretation of this material.

Copyright Law © March 11, 1957 Law No. 57-298 of March 11, 1957, concerning the ownership of literature and artists

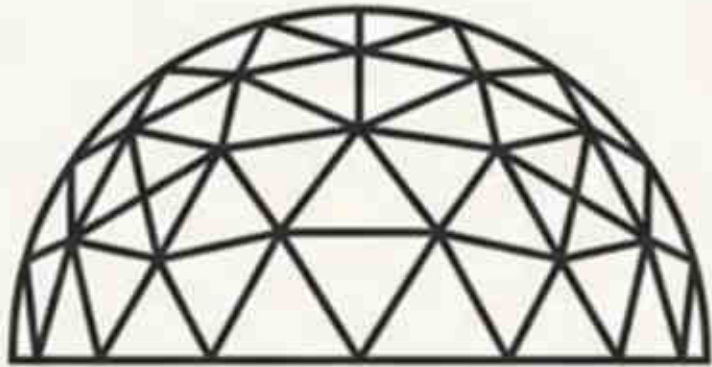
o Copyright © 2005-2026 Fands-LLC

o Copyright © 2009-2026 Fands-LLC div. Proactive Economic Intelligence

o All copyright © and trademark[®] are protected under the U.S. Copyright Act of 1976 and subsequent amendments, and related laws contained in Title 17 of the United States Code.

All U.S. rights, © and registered trademarks[®] are in accordance with applicable law.

Patents and Trademarks (December 12, 1980) <https://www.copyright.gov/>



FANDS-LLC

Proactive Economic Intelligence



FANDS-LLC is a proactive economic intelligence firm specializing in strategic analysis and technological solutions for critical sectors.

Michel L. Friedman

michel.friedman@fands-llc.biz

WhatsApp: +591 71696657

Physical Office: Aparthotel El Suto, El Suto Street, no number

San Jose de Chiquitos, Bolivia